

BEYOND CONN

Work and Money

Spending Money

- Money goes very quickly during your first few weeks on things such as books, house dues, room decorations, parties, movies and food.
- Textbooks can cost **up to \$600** a semester, depending on your courses (science and art history tend to be the priciest).
- The Bookshop in Cro sells new and used books, notebooks, and other supplies.
- At the end of the semester, you can **sell your books back** to the Bookshop for a percentage of the original price.
- **You can rent your textbooks** through the Bookshop at deeply discounted prices; visit www.rent-a-text.com to find out more.

Banking on Campus

- Many students find it convenient to have a checking account so they don't have to keep cash around.
- Not from Connecticut? It may be easiest to open an account at a New London bank.
- Local bank representatives will be on campus on Arrival Day and during your first week to give information and open accounts. RBS Citizens Bank owns the ATM in Cro.
- MasterCard and Visa are accepted by the College cashier in the accounting office in Fanning Hall for payment of miscellaneous College bills (but not tuition bills).
- You can use CCPay to make online payments. Please contact the bursar with any questions. Instructions on making an online payment:
 1. Log into Self Service (from CamelWeb, use the Self Service tab).
 2. Select the Student tab and look for the CCPay menu option in the middle of the list.
 3. Click this menu option and you will be brought directly into CCPay.
 4. Select Make Payment from the menu options on the left.

Check-Cashing Services

- You may cash your own personal checks and checks from relatives (maximum \$50) and College paychecks (first one issued before direct deposit for the stated amount) at the cashier's window on the first floor of Fanning (E3) on Fridays from 10 a.m. to noon and 1:30 to 3 p.m.
- Checks made out to you by friends will not be accepted.

Money and Your Camel Card

- Your Camel Card comes with **\$30 for use at the Oasis Snack Shop** or at **Jazzman's Café at Ruane's Den**. The money is stored in separate accounts.

Campus Jobs

- Work-study and non-work-study students can apply for campus jobs by getting an application from the Financial Aid Services office in the Larrabee Annex (G3).
- Students working on or off campus **MUST** complete an **Employment Eligibility Verification** (EEV) form. Please refer to the listing on page 9 of the EEV for acceptable forms of ID for the financial aid office.
- You'll find jobs in administrative offices, the dining halls, library, music library, Post Office, theater, box office, Athletic Center and other areas.
- Many offices give hiring preference to work-study students.
- Divisions that hire non-work-study students include the Theater Department and the offices of College Relations and Advancement (both in Becker House).
- Arrange your work schedule after your academic schedule is set!

Job-Finding Tips

- Check CamelWeb periodically for the latest job postings.
- Check the bulletin board in the Financial Aid Services office, Larrabee Annex.

www.conncoll.edu/admission/financial-aid/student-employment



HINTS & TIPS:

If you are going to work on campus, you must bring your original, unexpired forms of identification, such as a passport and driver's license. Make sure they're valid.

Off Campus

WHERE TO GO

Like most college towns, New London and the surrounding area offer a lot of the usual suspects for snacks, room essentials and supplies: **Wal-mart, Target, Home Depot, Shop-Rite, Bed Bath & Beyond** and **HomeGoods**. But once you've got your Brita and your bed risers, there are a bunch of cooler, quirkier places to explore throughout the year — in New London and beyond.

New London

Fiddleheads Food Co-Op is your one-stop shop for local and organic groceries. **Kamp Dog** next door is a greasy spoon kinda place with short hours but amazing chili dogs. **The Garde Arts Center** hosts many impressive cultural events, including a Winter Film Festival and lots of concerts. Pop inside to take a look at the lobby and theater, a historic 1926 building with a Moroccan feel.

Northern Indian serves delicious and reasonably cheap Indian food from, you guessed it, the northern region of the country. **Sweetie's** offers an impressive selection of grilled cheese sandwiches and panini, but don't forget to save room for a whoopie pie or cupcake. The organic café **Mangetout** also serves lunch and heavenly desserts.

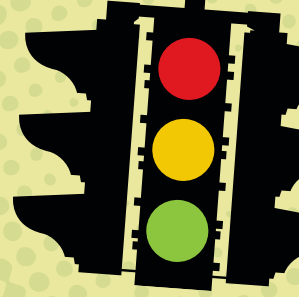
Looking for a cozy coffee shop to curl up with a latte and a good (text)book? **Muddy Waters** and **Bean & Leaf** are essential. Muddy Waters feels like your grandmother's living room, with couches and coffee tables and mouthwatering baked goods aplenty. Bean & Leaf roasts and brews fair-trade coffee. Free Wi-Fi and later



hours make it a go-to for Tuesday night study sessions. And don't miss the annual Spring and Fall Food Strolls.

If you're looking for more than just fair-trade coffee, walk down to the **Flavours of Life** store for fair-trade jewelry, clothing and handcrafted goods. **The Hygienic Art Galleries and Art Park** showcase the work of local artists at events throughout the year. The **Salvation Army Thrift Store** and the **New London Antiques Center** on Bank Street are under-the-radar gold mines for vintage clothing and other must-haves.

Be sure to check out **Ocean Beach** and the beach at **Harkness Memorial State Park** during the warmer months. Harkness is a favorite for its picturesque mansion and large field that slopes to the water. Stop by **Michael's Dairy** on Montauk Avenue on your way back to campus for huge scoops of ice cream.



FURTHER AFIELD

A 10-minute drive up I-95 North will bring you to Mystic, a quintessential New England coastal town. Yes, you'll still find the famous **Mystic Pizza**, but **Pizzetta** also has tasty pies. Stop by **Bartleby's** or **Green Marble Coffee** for a caffeine fix before exploring many of the quaint shops on Main Street. Looking for an independent and locally owned bookstore? **Bank Square Books** can order anything and has a shelf featuring staff suggestions.

More into used books? Seek out the **Book Barn** in Niantic. You could spend a day and a half in their several locations and see only a fraction of their books!

Further north on I-95 is Providence, R.I. The city has two cultural attractions that should top your list: the **Trinity Repertory Company** (amazing plays) and **Lupo's Heartbreak Hotel** (great live shows). **Providence Place** is a great shopping center, and the Italian food in the **Federal Hill** neighborhood is worth the drive.

Hartford, the state capital, is less than an hour from New London. Catch a play at **Hartford Stage**, go shopping at **Westfarms Mall** or **Blue Back Square** in West Hartford, or check out exhibits at the **Mark Twain House** or the **Wadsworth Atheneum Museum of Art**.

46

New Haven is about a 45-minute drive down I-95 South and boasts an impressive array of shops, restaurants and other cultural attractions, including (but certainly not limited to) **Pepe's Pizza**, **Toad's Place**, **Urban Outfitters**, **IKEA** and **Yale Repertory Theatre**.

HOW TO GET THERE

Bicycle

- ▶ The campus offers racks around campus for parking your bike.
- ▶ Spokespeople, a student-run bicycle collective, maintains a fleet of bicycles that are available for short- and long-term rental.
- ▶ Downtown New London is a quick 10-minute ride away.



Camel Van

- ▶ The Camel Van departs campus on the hour and half hour, providing service to downtown New London (including the Amtrak, Shore Line East and Greyhound stations), various malls, supermarkets and local attractions.
- ▶ In general, the Camel Van runs Thursday through Sunday, although the hours and days vary slightly each year.
- ▶ The Office of Student Engagement and Leadership Education (SELE) organizes the Camel Van service. Contact SELE for more information. You'll get a complete schedule at Orientation!

Zipcar (car-sharing program)

- ▶ Two Zipcars live on campus next to Larrabee Green (G3) behind Smith House.
- ▶ Join the program at www.zipcar.com/connecticutcollege for a discounted membership: no application fee, \$25 first annual fee and \$45 worth of free driving for your first month when you use promo code B2S2014. (This promotion expires Oct. 15, 2014.)
- ▶ Reservations include gas, insurance and 180 miles per day. Rental rates start at \$7.50/hour or \$69/day during the week and \$8.50/hour or \$77/day on weekends.

Train & Bus

- ▶ New London is served by train (Amtrak.com and Shoreline East.com) and bus (Greyhound.com) from Union Station downtown.
- ▶ Amtrak runs to Boston, Providence, New Haven, New York City, Philadelphia and Washington, D.C. Shore Line East runs to New Haven.
- ▶ If you're heading to New York and

aren't in a rush, you can save a little money by taking the Shoreline East to New Haven and then switching to Metro North.

- ▶ Whether taking Amtrak or Greyhound, round-trip travel to any destination will cost far less if you book several weeks in advance.

Plane

- ▶ T.F. Green Airport, just south of Providence, is about an hour away from campus.
- ▶ Bradley International is north of Hartford, about 1 hour and 15 minutes from New London.
- ▶ Taxi service to these airports ranges from about \$105 to \$120.

The Flying Camel Airport Shuttle

- ▶ Available around Thanksgiving and winter, spring and summer breaks to and from New London Union Station and T.F. Green Airport, located outside Providence, R.I.
- ▶ The College partners with a transportation company to offer students a discounted fare for shuttle transportation, billed to individual student accounts.
- ▶ SELE organizes this service and will provide students with pricing and reservation information before each academic break.

Taxi

Plug these numbers into your phone. You never know when you might need them!

- ▶ Harry's Taxi 860-444-2255 (option to pay with your Camel Card ID number)
- ▶ Port City Taxi 860-444-9222
- ▶ Yellow Cab Co. 860-443-4321
- ▶ Norwich Taxi 860-447-1870

RESTAURANTS

2Wives Brick Oven Pizza, 45 Huntington St., New London; 860-447-9337 | Gourmet pizza, panini and salads, plus Sunday afternoon karaoke!

***Azu Restaurant**, 32 W. Main St., Mystic; 860-536-6336 | Chic ambience and American fusion cuisine give Azu a New York City vibe.

Bangkok City, 123 State St., New London; 860-442-6970 | Moderately priced Thai entrées in a casual environment.

Bean & Leaf, 463 Bank St., New London; 860-701-0000 | Coffee, tea, light meals and sweet treats in a laid-back space. Occasional poetry and music performances.

***Bravo Bravo**, 20 East Main St., Mystic; 860-536-3228 | A local favorite offering Italian food and a city feel in downtown Mystic.

***Caffe NV**, 57 Boston Post Road, Waterford; 860-444-8111 | Classic Greek with some Italian and American fare.

Captain Scott's Lobster Dock, 80 Hamilton St., New London; 860-439-1741 | A revered seasonal seafood shack on the edge of a marina.

***Chaplin's Restaurant**, 165 Bank St., New London; 860-443-0684 | Watch the chef prepare new and traditional American dishes, locally caught seafood and more.

Dev's on Bank Street, 357 Bank St., New London; 860-442-3387 | "Mediterranean" tapas bar and restaurant combining Spanish and Asian cuisine.

Fred's Shanty, 272 Pequot Ave., New London; 860-447-1301 | Seasonal water-side spot beloved by locals for lobster rolls, clams, native scallops, hot dogs and burgers.

Hot Rod Café, 114 Bank St., New London; 860-447-2320 | A campus favorite for wings, apps and wraps, plus pool tables and board games.

Jasmine Thai, 470 Bank St., New London; 860-442-9991 | Popular Thai restaurant with a substantial Japanese menu, including sushi.

Kamp Dog, 15 Broad St., New London; 860-443-3000 | Hot breakfasts, grilled hot dogs and burgers with homemade fries and sides.

Mangetout, 140 State St., New London; 860-444-2066 | Organic, mostly vegetarian fare and homemade desserts.

***Milagro**, 142 Water St., Stonington; 860-535-8178 | Authentic Mexican food in a colorful, intimate setting.

Mirch Masala, 156 Kings Highway, Groton; 860-445-8043 | Classic Indian food, served buffet-style at lunch every day.

Mr. G's, 452 Williams St., New London; 860-447-0400 | Another campus favorite: sandwiches, burgers, pizza and dinner entrées in a relaxed atmosphere close to campus.

Muddy Waters Café, 42 Bank St., New London; 860-444-2232 | Soups, sandwiches, salads and pastries in a homey setting. An outdoor terrace overlooks the Thames River.

Northern Indian Restaurant, 150 State St., New London; 860-437-3978 | Casual atmosphere and tasty Indian food, including a weekday lunch buffet.



***Olio Restaurant and Bar**, 33 King's Highway, Groton; 860-445-6546 | Contemporary Italian fare in a bistro-like atmosphere.

***On the Waterfront**, 250 Pequot Ave., New London; 860-444-2800 | Seafood, Italian and American cuisine in a spacious dining room facing the Thames.

Ortega's, 108 North St., Groton; 860-405-1275 | Genuine Tex-Mex in a friendly, relaxed setting.

Norm's Diner, 171 Bridge St., Groton; 860-405-8383 | A classic American diner serving classic diner fare: omelets, pancakes, sandwiches and ever-changing specials.

Paul's Pasta, 223 Thames St., Groton; 860-445-5276 | Pasta is made fresh daily and paired with high-quality ingredients at this popular spot on the Thames.

Paesano's Bar & Bistro, 929 Bank St., New London; 860-447-9390 | Lunch, dinner and take-out Italian entrees and New York-style pizza.

***Oyster Club**, 13 Water St., Mystic; 860-415-9266 | "Farm & sea to table" fine dining and raw bar in downtown Mystic.

Pollos a la Brasa, 255 Broad St., New London; 860-447-8181 | Authentic and affordable Peruvian and South American food.

Recovery Room, 445 Ocean Ave., New London; 860-443-2619 | Gourmet pizza, entrees and salads in a lively setting.

Rita's, 361 Colman St., New London; 860-444-1600 | Italian ice, custards, sundaes, milkshakes and more frosty treats.

***S&P Oyster Co.**, 1 Holmes St., Mystic; 860-536-2674 | Traditional New England seafood with a South American flair, in a two-story building overlooking the Mystic River and drawbridge.

Saeed's International Market, 464 Ocean Ave., New London; 860-440-3822 | A market selling Italian, Greek and Middle Eastern food and groceries.

Singapore's Grill and Sushi Bar, 938 Bank St., New London; 860-442-3344 | Extensive menu featuring a fusion of cuisines, including Chinese, Malaysian, Indian and Japanese.

Washington Street Coffee House, 13 Washington St., New London; 860-437-0664 | Eclectic, affordable fare for breakfast and lunch.

The Yolk Café, 825 Montauk Ave., New London; 860-437-0898 | Hearty breakfasts and lunches in a cozy neighborhood spot, with picnic tables for nice days.

There are a lot more restaurants in the area than just those listed, including popular chains including **Buffalo Wild Wings**, **Chili's**, **LongHorn Steakhouse**, **Moe's Southwest Grill**, **Outback Steakhouse**, **Panera Bread** and **Ruby Tuesday**.

* Slightly pricier places that are farther from campus.

LOCAL ATTRACTIONS

The Coast Guard Academy Bowling Center, located in Leamy Hall, 15 Mohegan Ave., New London | A six-lane, newly renovated facility offering brand-new, state-of-the-art electronic scoring, glow-in-the-dark bowling and new seating areas. Call the bowling alley manager at 860-444-8470 for more information, or email him at Victor.L.Iannone@uscg.mil.

Fort Trumbull State Park, 90 Walbach St., New London; 860-444-7591 | Built in the 1840s; features a visitor center, historical exhibits, fishing pier, picnic area and walking trails.

Foxwoods Resort Casino and MGM Grand, 350 Trolley Line Blvd., Mashantucket; 800-369-9663; www.foxwoods.com.

Harkness Memorial State Park, 275 Great Neck Road, Waterford; 860-443-5725 | More than 230 acres with spectacular gardens, picnic area and beaches; panoramic views of Long Island Sound.

Lyman Allyn Art Museum, 625 Williams St., New London; 860-443-2545; www.lymanallyn.org | Located next door to the College; contains more than 15,000 works of art.

Mashantucket Pequot Museum & Research Center, 110 Pequot Trail, Mashantucket; 800-411-9671; www.pequotmuseum.org | Museum detailing the history of the Mashantucket Pequot Tribal Nation.

Mohegan Sun, 1 Mohegan Sun Blvd., Uncasville; 888-226-7711; www.mohegansun.com | A short drive or bus ride away; entertainment, shopping and restaurants.

Monte Cristo Cottage, 325 Pequot Ave., New London; 860-443-5378 | Playwright Eugene O'Neill's boyhood home.



Mystic Aquarium & Institute for Exploration, 55 Coogan Blvd., Mystic; 860-572-5955; www.mysticaquarium.org | More than 500 species of fish, sea lions, penguins, whales and sharks.

Mystic Seaport, 75 Greenmanville Ave., Mystic; 860-572-0711; www.mysticseaport.org | A "living" museum with authentic 19th-century ships, maritime village with historic homes and working craftspeople.

Ocean Beach Park, 98 Neptune Ave., New London; 860-447-3031 | Salt water and pool swimming, water slides, water sports, miniature golf, and picnic areas.

Rocky Neck State Park, Route 156, Niantic; 860-739-5471 | Swimming, hiking and camping facilities on 710 acres of state-owned land.

Rhode Island State Parks, 401-222-2632; www.riparks.com | Beautiful beaches with big waves line the coast in Rhode Island.

Submarine Force Library and Museum, 1 Crystal Lake Road, Groton; 860-694-3174; 800-343-0079 | Tour the historic submarine USS Nautilus and visit this library and museum.

Waterford Speedbowl, 1080 Hartford Turnpike, Waterford; 860-442-1585 | Short-track auto racing on Wednesdays, Fridays and Saturdays.