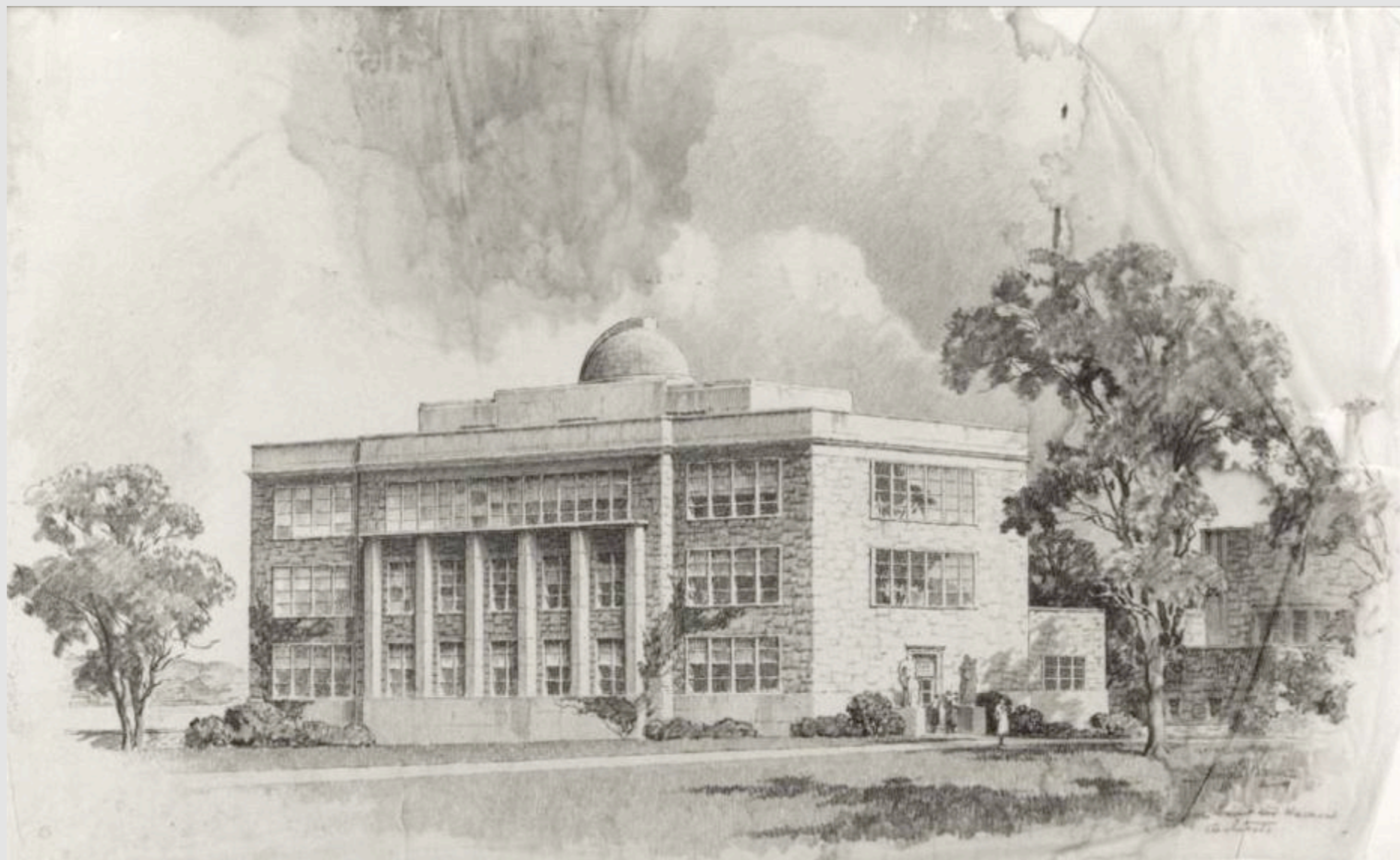


**The Transformation  
of Bill Room 106  
into the Silfen Auditorium**

**Built in 1939  
Transformed in 2008**



**1939**  
**Artist's rendering of**  
**Frederick Bill Hall**



**Groundbreaking  
President Katharine Blunt with shovel  
Donor, Mrs. Frederick Bill, seated**



**Construction of Bill Hall  
with New London Hall (left) and Fanning (right) in background**



**Bill Hall upon completion, viewed from the Green,  
showing exterior entrance to Bill Room 106  
with glass block windows**



**Aerial view of campus including newly completed Bill Hall  
adding space for Psychology, Physics and Studio Art**



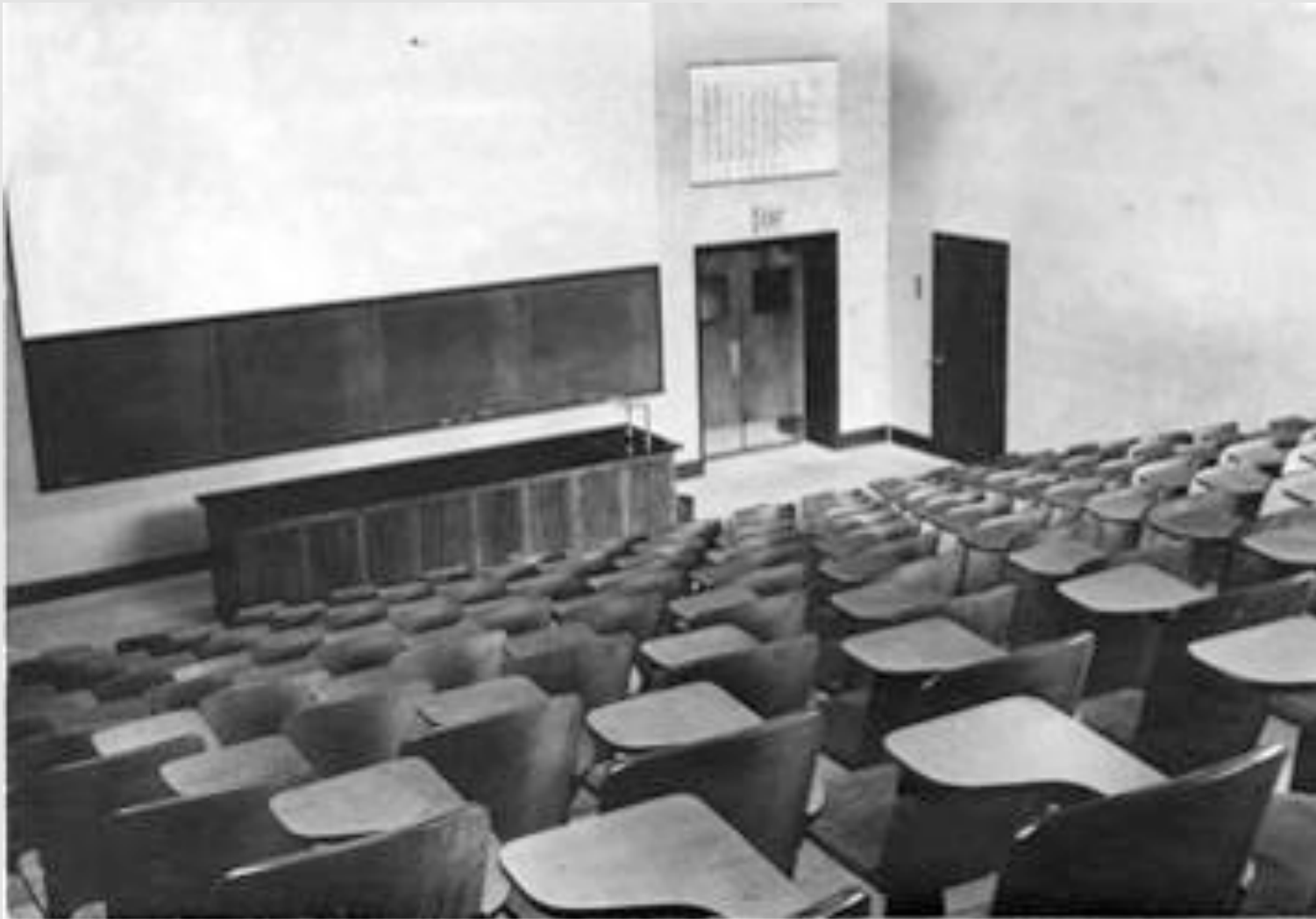
**Bill Hall classes:  
A psychology lab**



**An astronomy class  
on the roof**



**A drawing class**



### **Bill Room 106**

**“which has sound projection machine, silver screen and other equipment for visual education and demonstration purposes”  
reported by *The New London Evening Day* in 1940**



**68 years later  
May 2008  
Just prior to renovation**



**Renovation begins with demolition**  
**First, removing the chairs**



**Removing the lab bench**



**Demolition complete**



**Widening the tiers for student tables**



**Building a temporary floor to assist construction,  
10 feet off the ground at the front of the room**



**Updating the  
HVAC system**



**Temporary floor at the back of the room,  
level with the back door**



**Installing the soffit  
for the  
drop ceilings  
at the back of the room**



**Installing the drop ceiling, projection system mounts and lighting**



**Installing carpeting, student tables,  
room darkening, projectors, paint and wood trim**



**Installing the expanded blackboard with lighting, wood trim, faculty table, projection screen and media lectern**



**Wiring, wiring everywhere:  
serving data, power, projection and media controls**



**Electronics going into the media cabinet and lectern**



**Installing seating, wireless networking,  
sound system, accessibility lift, and artwork**



**August 2008  
Transformation Complete**













## Introduction to Statistics with Calculus





**Pensez Francais**



**Introduction to Physical Geology**





**Fiction and Film in Modern China**



## Psychology as a Natural Science



# **The Silfen Auditorium**

**Transforming  
teaching and learning opportunities  
at Connecticut College**

## **Credits**

- **Presentation created by Chris E. Penniman, Information Services**
- **Photographs taken by Information Services staff, College Relations staff, Ellenzweig Associates, Inc. Architects**
- **Historic images from the Linda Lear Center for Special Collections and Archives**
- **Special thanks to the faculty and students who allowed us to photograph their classes and to Janet V. Hayes, Information Services, for her assistance with graphics**