
Campus Planning Newsletter

The Office of Finance and Administration

CONNECTICUT
COLLEGE



November 2025

Facilities Management and Campus Planning Update

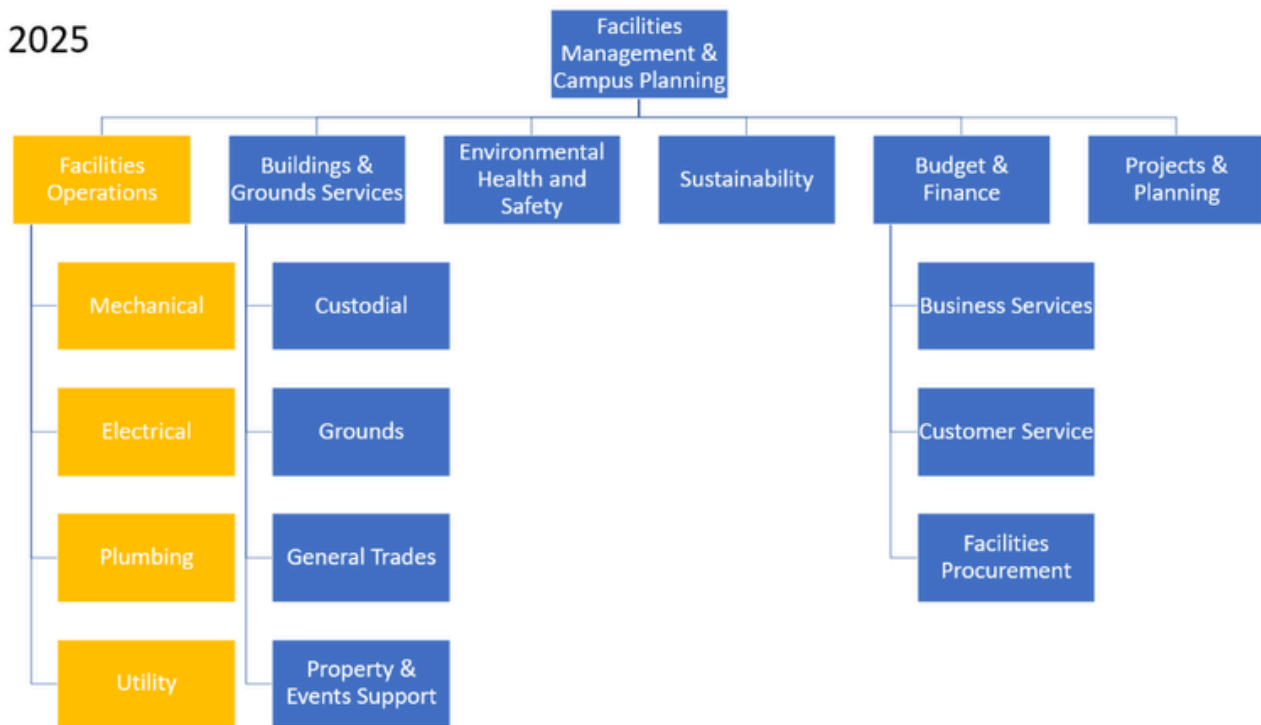
Dear members of the Connecticut College community,

As the fall semester is underway, campus life has returned to its full rhythm, and our facilities projects are progressing steadily. Work continues on major projects such as the Harris Renovation, Cro-Plex Pedestrian Connector and the Switchgear installation. Careful coordination among contractors, design teams, and college stakeholders has helped ensure that projects advance safely and efficiently, with minimal disruption to daily campus activity. The progress made this month sets the stage for continued success as these projects move into their next phases.

As indicated in earlier announcements, this past month, facilities management began onboarding SMG who will be providing outsourcing services for our trades departments. This strategic staffing shift to outsourcing allows us to align with our strategic goals, ensure long-term sustainability, fill long vacant positions, improve operational efficiency, access specialized expertise and scale more flexibly in a competitive environment. This transition does not change the end-user experience. Please continue to put in work orders through the ticket management system, emailing workreq@conncoll.edu or by calling 860-439-2355. The SMG management team will be introduced to various stakeholders as they continue to onboard.

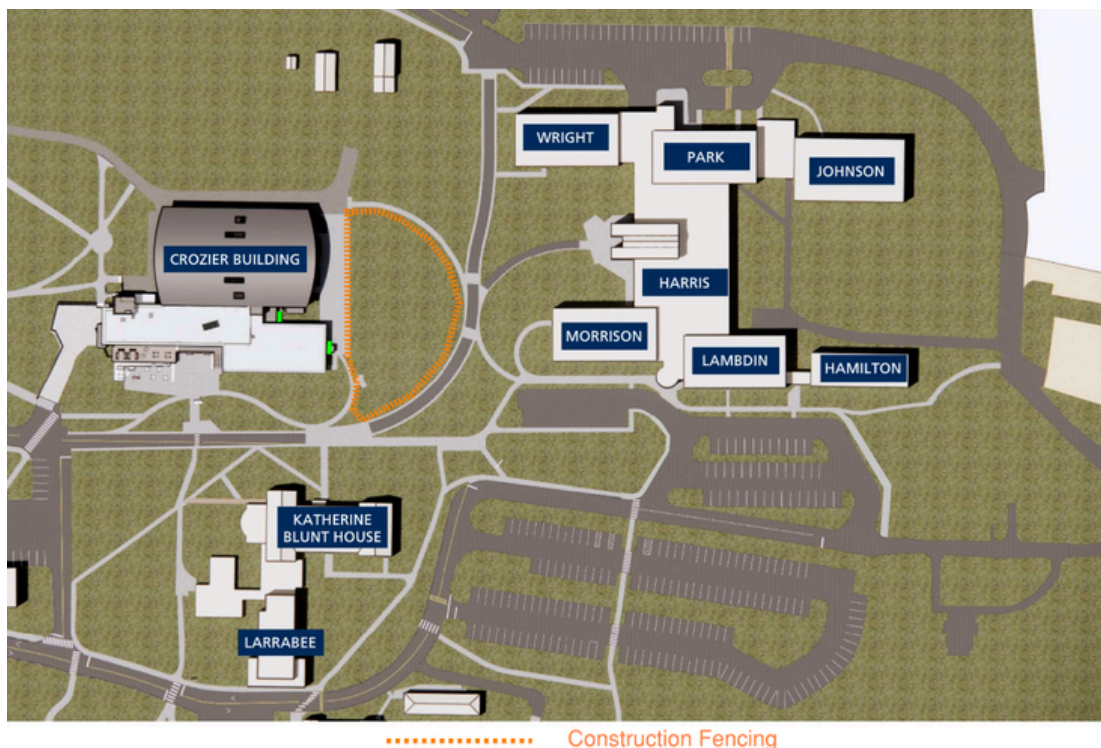
Below is an organizational chart of the facilities management and campus planning department structure with the outsourced departments highlighted in yellow.

2025



Crozier-Plex Pedestrian Connector

The project continues to move forward as crews work to complete the final stages of exterior construction before the winter season. Intersection work outside the current fence line is scheduled to begin around November 10, including roadway and sidewalk restoration, new curbing, paving, and improvements to pedestrian circulation. A more detailed communication on this disruption is forthcoming. Final fall plantings are also being completed in early November, along with the last sections of paver installation. These efforts will help stabilize the site for winter while setting the groundwork for the next phase of improvements in the spring. As the fall construction season comes to a close, visible progress can now be seen throughout the project area. Throughout next week, you will see major fencing removal beginning and continuing through the month of November. The logistics below visualize what the campus will see once the project is stabilized and paused for the winter in early December. The work completed this month marks a significant step toward a more connected, accessible, and welcoming campus landscape.



Harris Renovation

Progress on the Harris Refectory renovation continues at a steady pace as construction teams work carefully around daily dining operations to keep the facility open for students. Coordinating upgrades while maintaining meal service has required detailed planning and phased scheduling to minimize disruption to campus life. Throughout November, interior work will focus on mechanical and finish upgrades that will enhance both functionality and comfort in the dining space. While some areas may appear unchanged day to day, significant progress is being made behind the scenes to prepare for the next stage of transformation.

More extensive work is planned for the Thanksgiving and winter breaks, when reduced campus activity will allow crews to complete larger-scale improvements without interrupting service. The project remains on track for completion in January 2026, when students will return to a refreshed, more efficient, and welcoming dining experience.

Switchgear Project

Probably the most exciting news in our office this past month has been the arrival of the switchgear. It has been successfully installed, marking a major milestone for the project. The underground connection has been completed, and sidewalks will be poured this week. Reservoir Street will be reopened, and fencing near Smith and Burdick will be removed by the end of this week. The generators are still on schedule to arrive early 2026, with project completion later in the year. Once completed, this switchgear will upgrade an outdated system, making our power hub more reliable and regulated. The generator will generate enough power for the campus in the event of a power outage.



We will continue to provide updates as the projects progress and as future plans are developed. Continue to visit our [website](#), where we will provide updates, including pictures and logistics, on these projects.

Sincerely,

Justin R. Wolfradt, MSM CM, FMP

Executive Director of Facilities Management and Campus Planning
