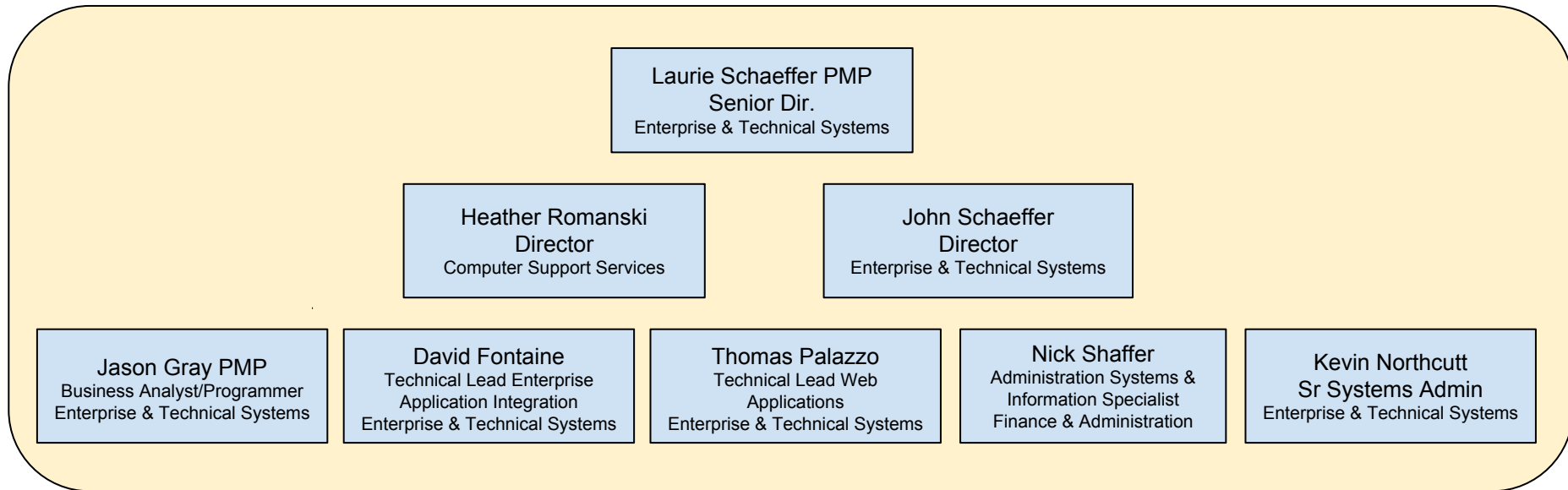


Portfolio & Project Management Office (PPMO)



Functions of the Portfolio & Project Management Office (PPMO)

Slates/Assigns Projects

in consultation with AVP, based on ratings, availability of resources, and level of importance to the requesting department..

The PPMO assigns project manager and resources to projects, and reports this information to ESAC

Portfolio Management

Provides centralized management of ETS Portfolio (which includes programs, projects, and maintenance/operations) to achieve strategic objectives

Program Management

Oversees Program management - a set of interrelated projects designed to accomplish a single outcome

Project Management

The PPMO provides training, assistance, and tools for project managers across the College.
Meets with departments to assist with creation of project charters.